



ERI Limited

ENVIRONMENTAL IMPACT ASSESSMENT: VOLUME 2 - PLANS

Chapter 13: Water Environment





ERI Limited

ENVIRONMENTAL IMPACT ASSESSMENT: VOLUME 2 - PLANS

Chapter 13: Water Environment

TYPE OF DOCUMENT (VERSION) PUBLIC

PROJECT NO. 62300457

DATE: JANUARY 2024

WSP

1 Capital Quarter

Tyndall Street

Cardiff

CF10 4BZ

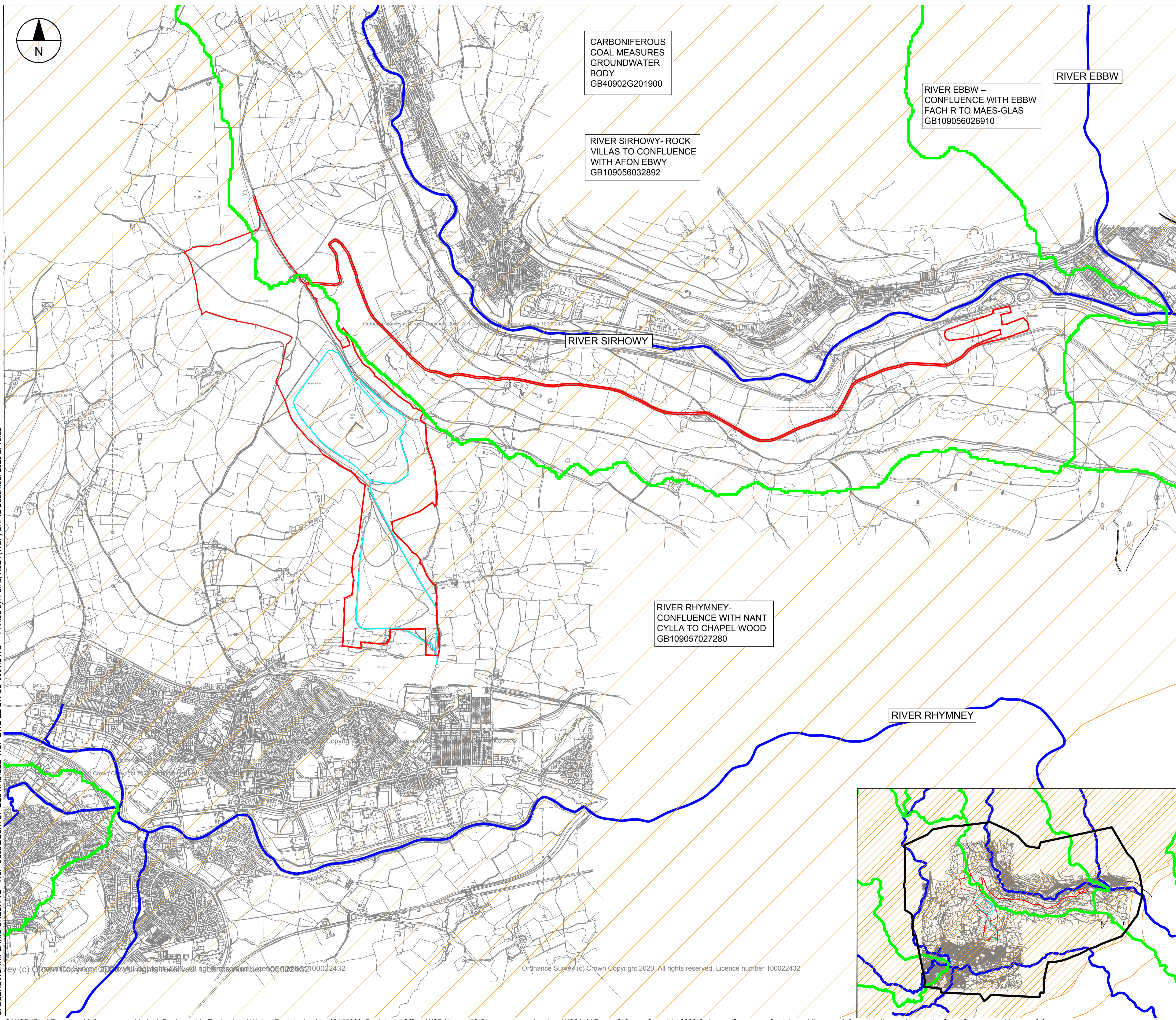
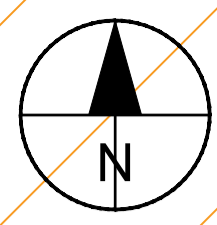
Phone: +44 2920 769 200

WSP.com

V2-S13/0001

WATER ENVIRONMENT PLAN





CARBONIFEROUS
COAL MEASURES
GROUNDWATER
BODY
GB40902G201900

RIVER SIRHOWY- ROCK
VILLAS TO CONFLUENCE
WITH AFON EBWY
GB109056032892

RIVER EBBW –
CONFLUENCE WITH EBBW
FACH R TO MAES-GLAS
GB109056026910

RIVER EBBW

RIVER SIRHOWY

RIVER RHYMNEY-
CONFLUENCE WITH NANT
CYLLA TO CHAPEL WOOD
GB109057027280

RIVER RHYMNEY

KEY:

WATER FRAMEWORK DIRECTIVE (WFD) GROUNDWATER BODIES CYCLE 3	
WATER FRAMEWORK DIRECTIVE (WFD) RIVER WATERBODY CATCHMENTS CYCLE 3	
MAIN RIVERS	
EXISTING SITE DRAINAGE	
RED LINE BOUNDARY (RLB)	
RLB 2KM BUFFER	

P01	NF	RD	LS	INITIAL ISSUE	23/11/2023
Rev	Dwn	Chkd	App'd	Description	Date

Purpose of Issue
Issued for Approval

Classification
Public

Client
Energy Recovery Investments Ltd

Project
Bedwas Tips Reclamation

Drawing
**Water Environment Plan
V2-S13/0001**

Scale at A1	Drawn	Checked	Approved
1:10000	NF	RD	LS

Project No.	Date
62300457	23/11/2023

Drawing Identifier	Revision
Project -Originator -Function -Spatial -Form -Discipline -Number	
BED-WSP-EWE-ZZ-DR-CD-0001-P01	



4th Floor, 6 Devonshire Square, London, EC2M 4YE, UK
T+ 44 (0) 207 337 1700, F+ 44 (0) 207 337 1701
wsp.com

C:\USERS\NOAH.FERRISON\DRIVE - WSP\0365\DESKTOP\BEDWAS\BED-WSP-EWE-ZZ-DR-CD-0001.DWG Printed by: Ferris, Noah (WSP) On: 12 December 2023 at 16:32

Copyright (c) Ordnance Survey (2022). All rights reserved. Licence number 100022432

Ordnance Survey (c) Crown Copyright 2020. All rights reserved. Licence number 100022432



1 Capital Quarter
Tyndall Street
Cardiff
CF10 4BZ

wsp.com

PUBLIC